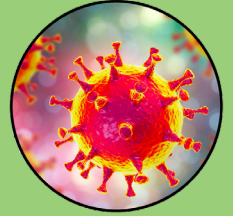


Coronavirus Disease 2019 (COVID-19)

If you have returned from travel to an affected country in the last 14 days and are experiencing symptoms mentioned below, call the Division of Public Health at 1-866-408-1899.

What is it?

- A new respiratory virus first identified in Wuhan, China
- It has the potential to cause severe illness and pneumonia in some people



How is it spread?

- Through the the air by coughing and sneezing
- Close personal contact, such as touching or shaking hands
- Touching an object or surface with the virus on it, then touching your mouth, nose, or eyes



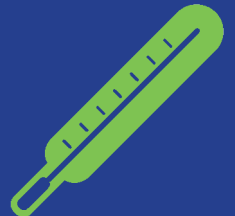
Who is at risk?

- Travelers to and from certain affected countries are at increased risk as are their close contacts
For a list of affected countries, visit [cdc.gov/coronavirus/2019-ncov/travelers/index.html](https://www.cdc.gov/coronavirus/2019-ncov/travelers/index.html)
- Current risk to the general public is low
- See travel guidance from the Centers For Disease Control and Prevention at wwwnc.cdc.gov/travel

What are the symptoms?

Illnesses can be mild, or in some cases be severe enough to require hospitalization. Symptoms of this respiratory illness primarily include:

- Fever
- Cough
- Shortness of breath



How is it prevented and treated?

- Similar to prevention of other respiratory illnesses, including the flu:
 - Wash hands often
 - Avoid touching eyes, nose, or mouth with unwashed hands
 - Avoid contact with sick people
 - Stay home while you are sick; avoid others
 - Cover mouth/nose with a tissue or sleeve when coughing or sneezing
- Most people with mild coronavirus illness will recover on their own by drinking plenty of fluids, resting, and taking pain and fever medications



DELAWARE HEALTH AND SOCIAL SERVICES
Division of Public Health

For more information, visit de.gov/coronavirus
Call 1-866-408-1899.

Medical providers should call 1-888-295-5156.
Email dphcall@delaware.gov